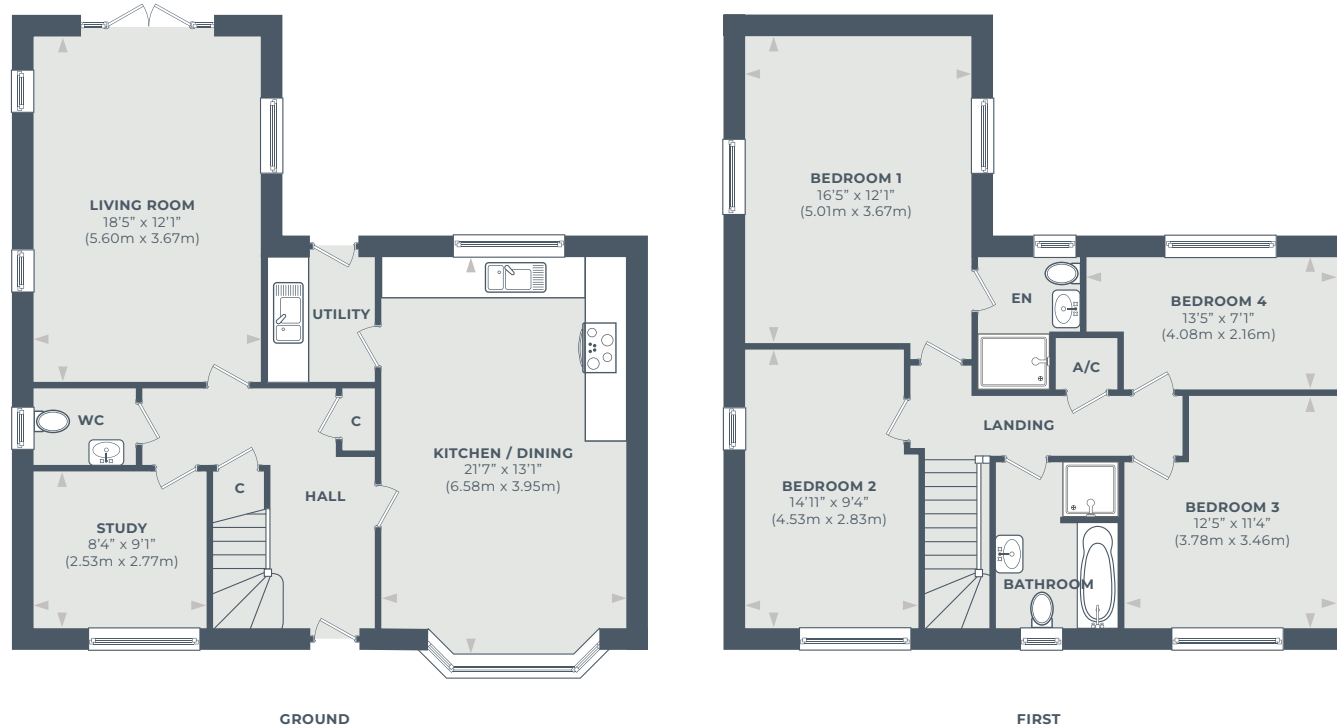


Plot One

Four bedroom detached - 1549sqft

Double Garage - 391sqft

Total of 1940sqft



Discover the charm of plot one, a 4-bedroom detached house with decorative tile hanging.

This home features a spacious study, a well-equipped kitchen leading to a dual aspect rear garden through patio doors.

Conveniently located utility room off the kitchen with access to the garden.

Enjoy the luxury of an ensuite in the principal bedroom and a stylish 4-piece main bathroom.

Includes a double garage and parking for two vehicles.



Plot Two

Three bedroom detached - 1388sqft

Single Garage - 200sqft

Total of 1588sqft



Plot two is an inviting 3-bedroom detached property with a dedicated study, perfect for your work or creative needs.

The home boasts an open-plan kitchen with practical island and large family space, perfect for dining and relaxing. Patio doors seamlessly connecting to the rear garden.

Upstairs you will find a principle bedroom with an adjoining ensuite, subsequent bedrooms share a well designed main bathroom.

Your property includes a single garage and parking for two vehicles.



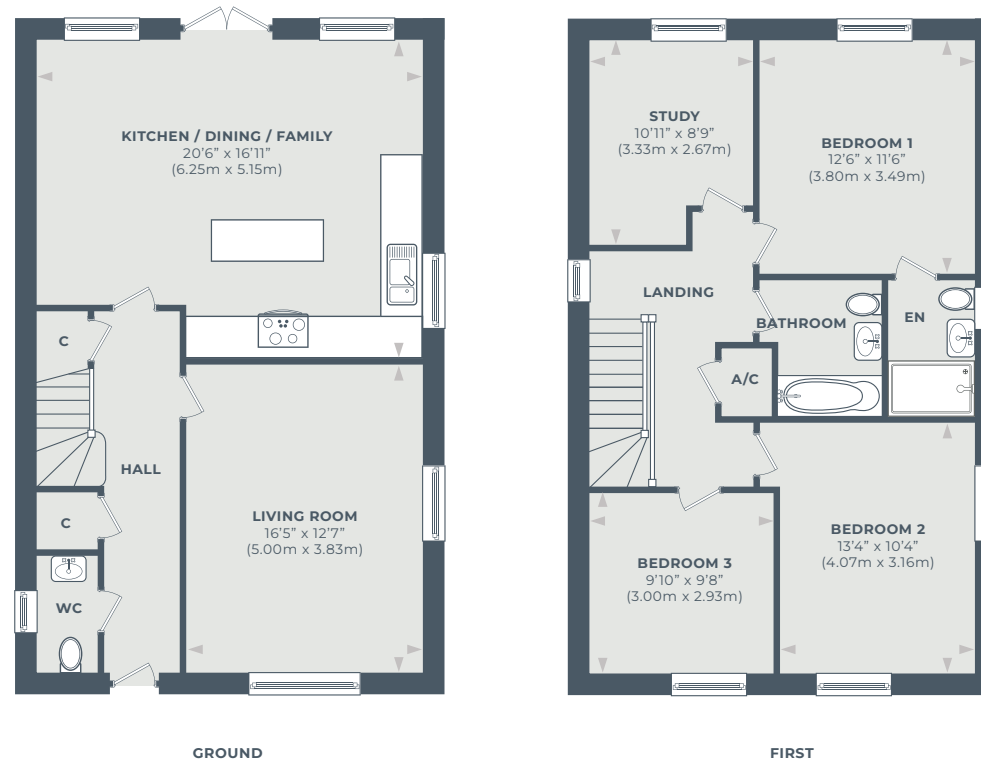
H22 KATE

Plot Three

Three bedroom detached - 1388sqft

Single Garage - 200sqft

Total of 1588sqft



Step into plot three, a thoughtfully designed 3-bedroom detached home.

The heart of the home is the kitchen, this open plan space includes an enviable island, space for a dining table and room for relaxing. Patio doors lead from the kitchen to seamlessly connect to the rear garden.

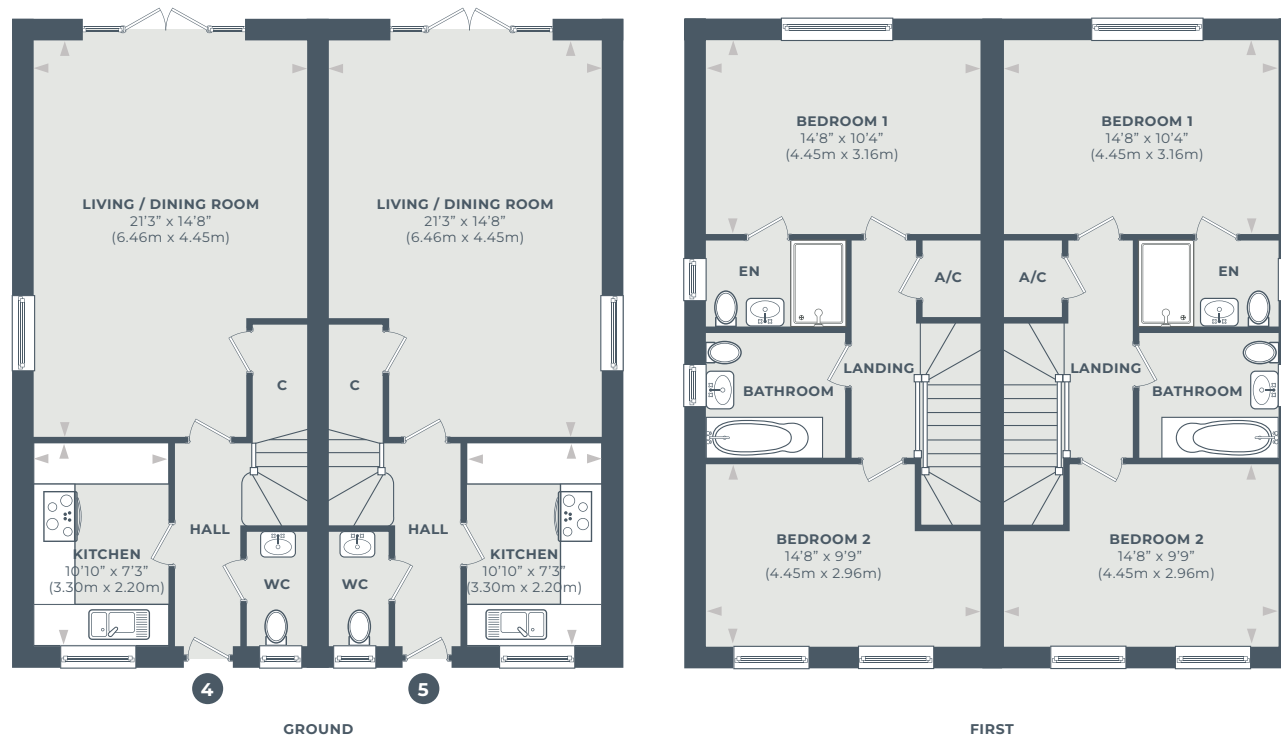
Upstairs you will find 3 bedrooms, two bathrooms and a dedicated study for your convenience.

A single garage runs alongside your new home with parking for two vehicles.



Plot Four and Five

Two bedroom semi-detached - 946sqft



Explore the charm of plots four and five, 2-bedroom semi-detached houses adorned with tile hanging and practical porches.

These delightful homes feature a living and dining room situated to the rear, with doors that open to the garden.

You will find two large double bedrooms on the first floor with an ensuite shower room to the principle and main bathroom.

Your new home includes parking for two vehicles.



Plot Six

Three bedroom detached - 1388sqft

Single Garage - 200sqft

Total of 1588sqft



Discover plot six, our 3-bedroom detached home with a single garage and parking for two vehicles.

Located to the rear of your home is an open-plan kitchen completed with an island and family space with patio doors to the garden.

This inviting residence features 3 generously sized bedrooms with the addition of a dedicated study for added versatility.

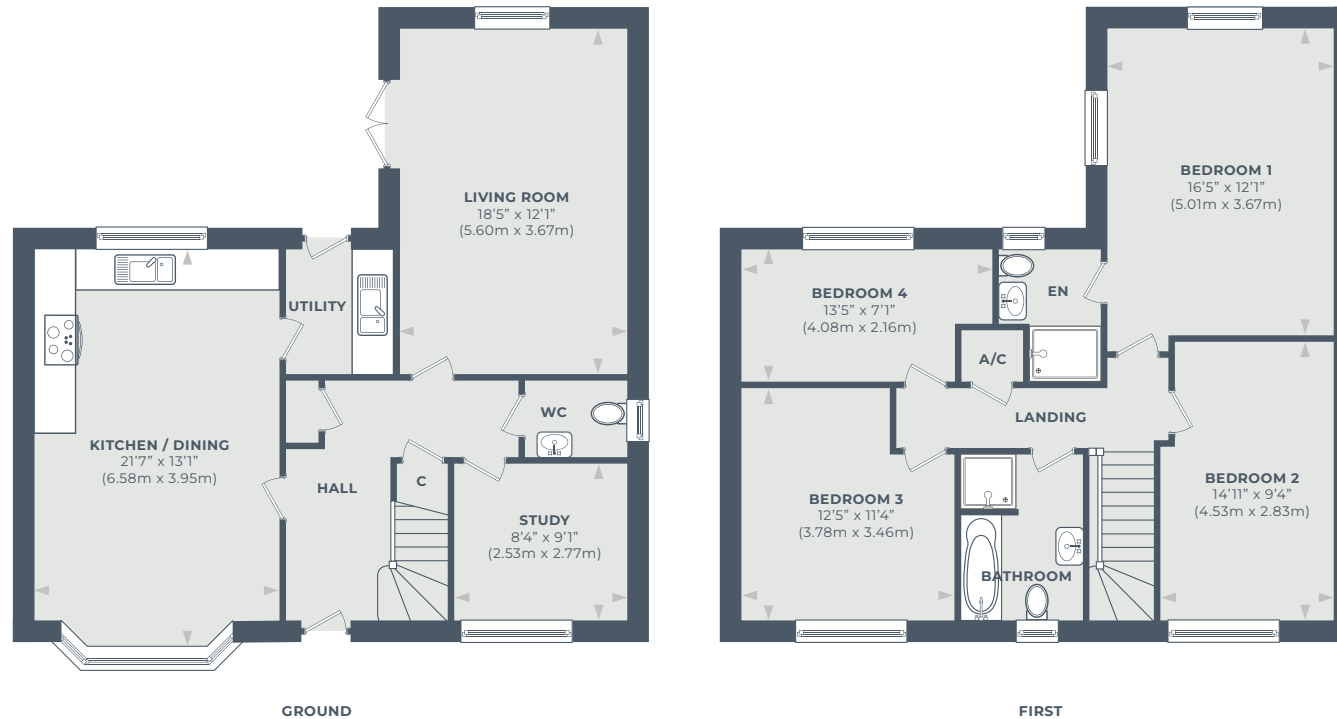


Plot Seven

Four bedroom detached - 1549sqft

Double Garage - 391sqft

Total of 1940sqft



Experience spacious plot 7, a 4-bedroom detached house with a charming bay window to the front elevation and practical double garage with additional parking.

This inviting residence features a study at the front, creating a perfect work space.

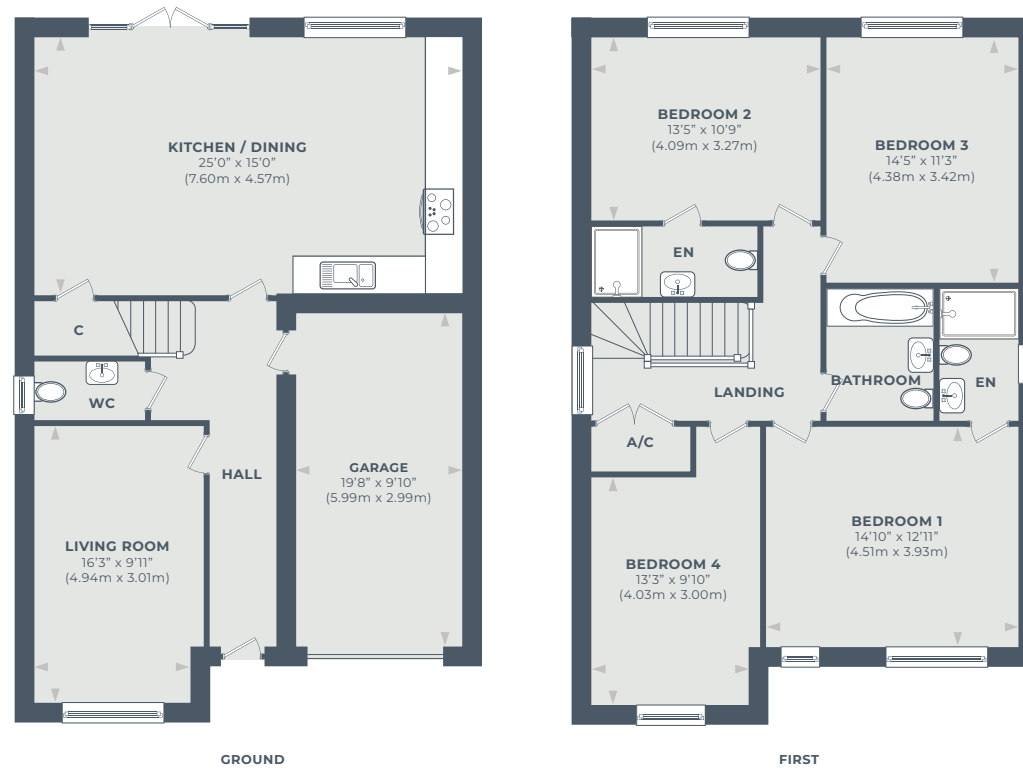
The well-designed kitchen includes a convenient utility room with access to the dual-aspect rear garden.

Along with four bedrooms, your new home includes an ensuite to the principle suite and the comfort of a 4-piece main bathroom.



Plot Eight

Four bedroom detached - 1618sqft



Plot eight is a 4-bedroom detached home with an integral single garage and convenient driveway for two vehicles.

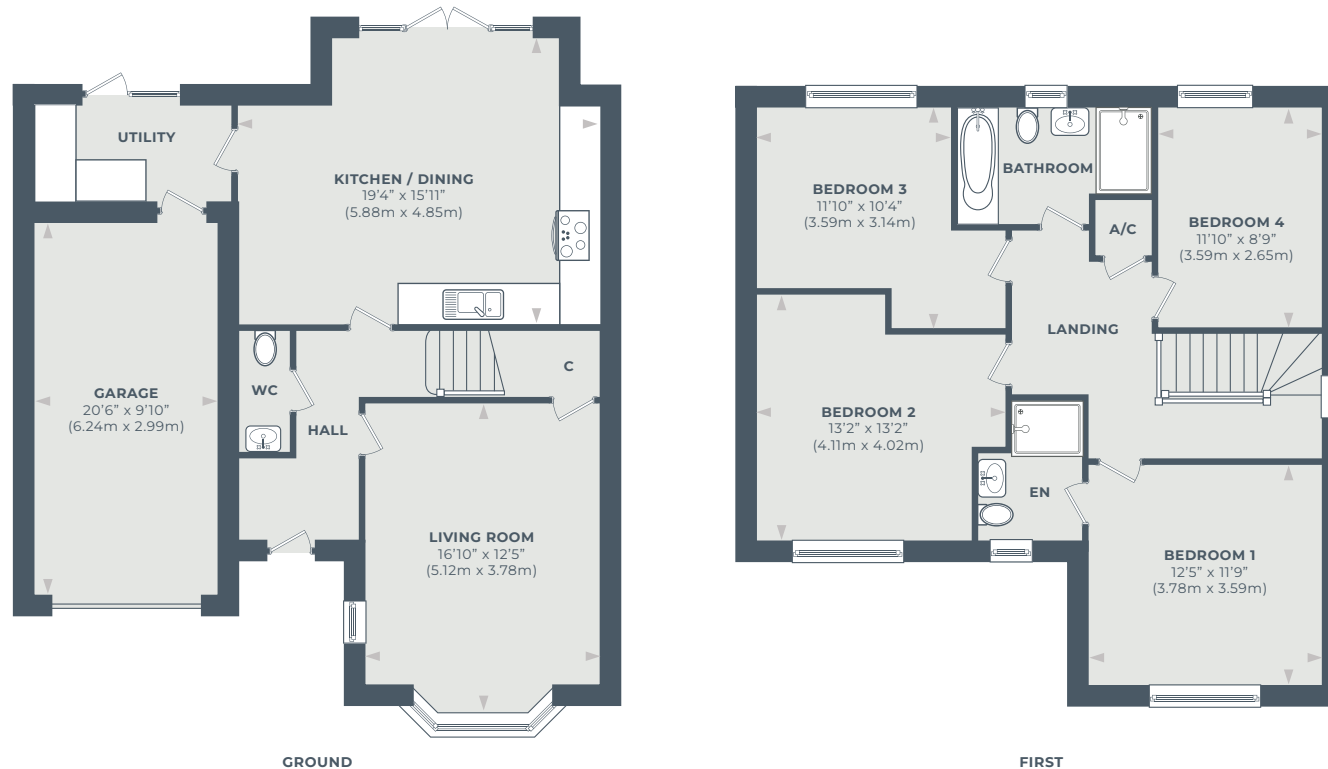
This inviting residence features a large kitchen diner at the rear, offering a delightful view of the garden through patio doors.

Enjoy the luxury of ensuite shower rooms to both the principal bedroom and bedroom two, along with a main bathroom.



Plot Nine

Four bedroom detached - 1444sqft



Experience the charming features of plot nine, with decorative tile hanging and bay window to the front elevation.

This 4-bedroom detached house enjoys the convenience of an integral single garage and a driveway for two vehicles.

Featuring a kitchen diner at the property rear with doors leading to the garden and a connecting utility with personal door.

Upstairs you will find four good sized bedrooms, with an ensuite shower room and 4 piece main bathroom.

